

承认书

Specification

客户名称:

Customer Name: \_\_\_\_\_  
 (请填写贵司全名)

规格书编号:

Spicification NO : \_\_\_\_\_ Spec-CMBF Series Rev.01

客户品名 :

Product P/N : \_\_\_\_\_  
 (请填写贵司物料品名)

华拓品名 :

Manufacturer's P/N : \_\_\_\_\_  
 (请填写欲承认的华拓品名)

变更履历:

Revised record:

Rev.	Date	Changed Contents	Change reasons	Approved by
01	2013-12-10	New released		Buck

客户承认栏 (请签名并写明日期后回传)

广州华拓电子科技有限公司

Customer's Approval

Confirmed	Checked	Prepared
Buck	Dana	Amy

Type: CMBF1005, 1608, 2012, 3216

**Feature/特长**

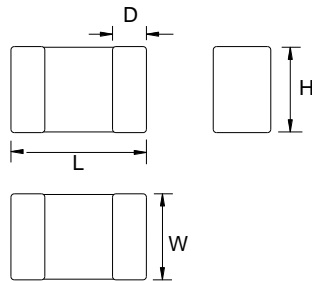
- Monolithic inorganic material construction.
- Excellent solderability and heat resistance.
- Used in a wide range of frequency to suppress EMI
- RoHS compliant.
- 无机材料构造。
- 良好的可焊性、耐焊性。
- 能在较宽的频率范围内抑制EMI。
- RoHS指定对应。

**Application/用途**

For noise suppression applications such as mobile phones, Personal computers, communication equipment, PDAs, Printers and other computer peripheral products.

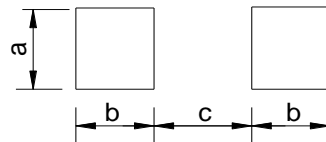
适用于携带电话、电脑及通信设备、PDA、打印机及周边设备噪音抑制用。

**Dimensions/外形图**



**Recommended Land Pattern**

推荐贴装尺寸



Unit: mm

Type	L	W	H	D	a	b	c	Packaging (pcs/reel)
CMBF1005	1.0±0.1	0.5±0.1	0.5±0.1	0.25±0.1	0.55	0.8	0.5	10000
CMBF1608	1.6±0.15	0.8±0.15	0.8±0.15	0.3±0.2	0.8	1.0	0.6	4000
CMBF2012	2.0±0.2	1.25±0.2	0.85±0.2	0.5±0.3	1.0	1.0	1.0	4000
CMBF3216	3.2±0.2	1.6±0.2	1.1±0.2	0.5±0.3	1.4	1.1	2.2	3000

Dimensions without tolerance are typical./无公差尺寸为参考值。

**Product Identification/品名注释**

C M B F 1608 - 300 P C K

(1) (2) (3) (4) (5) (6) (7) (8) (9)

(1) SMD/表面安装制品

(2) Multilayer chip /叠层片式

(3) Beads/磁珠

(4) Ferrite/铁氧体

(5) Dimension symbol/尺寸表示:

1608= 1.6 X 0.8 mm (L X W)

(6) Impedance value/阻抗值:

300= 30Ω, 301=300Ω, 102=1000Ω

(7) Tolerance/公差: P (±25%), M (±20%)

(8) Packing Style/包装形态: C=Carrier taping/载带包装

(9) Characteristic identification/特性标识

**CMBF1005 Electrical Characteristics**

Part Number	Impedance (Ω) ①	Test Frequency (MHz)	Rated current max. (mA)	DCR max. (Ω)
CMBF1005-300PCK	30 ± 25%	100	300	0.20
CMBF1005-400PCK	40 ± 25%	100	600	0.25
CMBF1005-600PCK	60 ± 25%	100	300	0.25
CMBF1005-800PCK	80 ± 25%	100	300	0.25
CMBF1005-121PCK	120 ± 25%	100	100	0.30
CMBF1005-151PCK	150 ± 25%	100	100	0.30
CMBF1005-221PCK	220 ± 25%	100	100	0.40
CMBF1005-301PCK	300 ± 25%	100	100	0.50
CMBF1005-471PCK	470 ± 25%	100	100	0.65
CMBF1005-601PCK	600 ± 25%	100	80	0.80
CMBF1005-102PCK	1000 ± 25%	100	300	1.20
CMBF1005-600PCM	60 ± 25%	100	100	0.30
CMBF1005-750PCM	75 ± 25%	100	300	0.40
CMBF1005-121PCM	120 ± 25%	100	80	0.45
CMBF1005-221PCM	220 ± 25%	100	200	0.60
CMBF1005-301PCM	300 ± 25%	100	50	0.75

① Test equipment: E4991A or equivalent; Test Fixture: 16192A or equivalents; Test temperature: 25±10°C

### CMBF1608 Electrical Characteristics

Part Number	Impedance (Ω) ①	Test Frequency (MHz)	Rated current max. (mA)	DCR max. (Ω)
CMBF1608-300PCK	30 ± 25%	100	700	0.20
CMBF1608-470PCK	47 ± 25%	100	500	0.20
CMBF1608-600PCK	60 ± 25%	100	700	0.20
CMBF1608-700PCK	70 ± 25%	100	700	0.20
CMBF1608-800PCK	80 ± 25%	100	700	0.20
CMBF1608-121PCK	120 ± 25%	100	600	0.25
CMBF1608-151PCK	150 ± 25%	100	600	0.25
CMBF1608-181PCK	180 ± 25%	100	200	0.30
CMBF1608-221PCK	220 ± 25%	100	550	0.30
CMBF1608-301PCK	300 ± 25%	100	500	0.35
CMBF1608-471PCK	470 ± 25%	100	350	0.45
CMBF1608-601PCK	600 ± 25%	100	500	0.50
CMBF1608-102PCK	1000 ± 25%	100	200	0.70
CMBF1608-100PCC	10 ± 25%	100	700	0.20
CMBF1608-300PCC	30 ± 25%	100	600	0.25
CMBF1608-600PCC	60 ± 25%	100	600	0.30
CMBF1608-121PCC	120 ± 25%	100	300	0.40
CMBF1608-151PCC	150 ± 25%	100	300	0.40
CMBF1608-221PCC	220 ± 25%	100	250	0.60
CMBF1608-301PCC	300 ± 25%	100	200	0.80
CMBF1608-471PCC	470 ± 25%	100	200	0.85
CMBF1608-601PCC	600 ± 25%	100	150	1.2
CMBF1608-102PCC	1000 ± 25%	100	80	1.5
CMBF1608-152PCH	1500 ± 25%	100	200	1.0
CMBF1608-182PCH	1800 ± 25%	100	200	1.0
CMBF1608-202PCH	2000 ± 25%	100	300	1.2
CMBF1608-222PCH	2200 ± 25%	100	100	1.5
CMBF1608-252PCH	2500 ± 25%	100	100	1.5
CMBF1608-121PCW	120 ± 25%	100	300	0.25
CMBF1608-151PCW	150 ± 25%	100	250	0.30
CMBF1608-221PCW	220 ± 25%	100	200	0.35
CMBF1608-301PCW	300 ± 25%	100	250	0.45
CMBF1608-471PCW	470 ± 25%	100	200	0.55
CMBF1608-601PCW	600 ± 25%	100	200	0.70
CMBF1608-801PCW	800 ± 25%	100	100	0.80
CMBF1608-102PCW	1000 ± 25%	100	100	0.90

① Test equipment: E4991A or equivalent; Test Fixture: 16192A or equivalents; Test temperature: 25±10°C

**CMBF2012 Electrical Characteristics**

Part Number	Impedance (Ω) <sup>①</sup>	Test Frequency (MHz)	Rated current max. (mA)	DCR max. (Ω)	Thickness (mm)
CMBF2012-170PCK	17 ± 25%	100	600	0.10	0.85 ± 0.2
CMBF2012-600PCK	60 ± 25%	100	900	0.10	0.85 ± 0.2
CMBF2012-800PCK	80 ± 25%	100	900	0.20	0.85 ± 0.2
CMBF2012-101PCK	100 ± 25%	100	800	0.20	0.85 ± 0.2
CMBF2012-121PCK	120 ± 25%	100	800	0.20	0.85 ± 0.2
CMBF2012-151PCK	150 ± 25%	100	800	0.20	0.85 ± 0.2
CMBF2012-221PCK	220 ± 25%	100	750	0.30	0.85 ± 0.2
CMBF2012-301PCK	300 ± 25%	100	700	0.30	0.85 ± 0.2
CMBF2012-471PCK	470 ± 25%	100	700	0.35	0.85 ± 0.2
CMBF2012-601PCK	600 ± 25%	100	500	0.40	0.85 ± 0.2
CMBF2012-801PCK	800 ± 25%	100	450	0.40	0.85 ± 0.2
CMBF2012-102PCK	1000 ± 25%	100	400	0.45	0.85 ± 0.2
CMBF2012-300PCC	30 ± 25%	100	700	0.20	0.85 ± 0.2
CMBF2012-600PCC	60 ± 25%	100	700	0.20	0.85 ± 0.2
CMBF2012-121PCC	120 ± 25%	100	600	0.25	0.85 ± 0.2
CMBF2012-151PCC	150 ± 25%	100	600	0.25	0.85 ± 0.2
CMBF2012-221PCC	220 ± 25%	100	400	0.30	0.85 ± 0.2
CMBF2012-301PCC	300 ± 25%	100	400	0.35	0.85 ± 0.2
CMBF2012-471PCC	470 ± 25%	100	400	0.40	1.25 ± 0.2
CMBF2012-601PCC	600 ± 25%	100	300	0.45	1.25 ± 0.2
CMBF2012-102PCC	1000 ± 25%	100	200	0.50	1.25 ± 0.2
CMBF2012-102PCH	1000 ± 25%	100	400	0.45	0.85 ± 0.2
CMBF2012-152PCH	1500 ± 25%	100	350	0.50	0.85 ± 0.2
CMBF2012-202PCH	2000 ± 25%	100	250	0.60	0.85 ± 0.2
CMBF2012-232PCH	2300 ± 25%	100	200	0.80	1.25 ± 0.2
CMBF2012-272PCH	2700 ± 25%	100	150	1.10	1.25 ± 0.2
CMBF2012-121PCW	120 ± 25%	100	300	0.15	0.85 ± 0.2
CMBF2012-151PCW	150 ± 25%	100	300	0.20	0.85 ± 0.2
CMBF2012-221PCW	220 ± 25%	100	250	0.30	0.85 ± 0.2
CMBF2012-301PCW	300 ± 25%	100	200	0.35	0.85 ± 0.2
CMBF2012-471PCW	470 ± 25%	100	200	0.40	0.85 ± 0.2
CMBF2012-601PCW	600 ± 25%	100	200	0.45	0.85 ± 0.2
CMBF2012-801PCW	800 ± 25%	100	150	0.55	0.85 ± 0.2
CMBF2012-102PCW	1000 ± 25%	100	100	0.65	0.85 ± 0.2

① Test equipment: E4991A or equivalent; Test Fixture: 16192A or equivalents; Test temperature: 25±10°C

### CMBF3216 Electrical Characteristics

Part Number	Impedance (Ω) ①	Test Frequency (MHz)	Rated current max. (mA)	DCR max. (Ω)
CMBF3216-700PCK	70 ± 25%	100	500	0.20
CMBF3216-121PCK	120 ± 25%	100	900	0.15
CMBF3216-151PCK	150 ± 25%	100	900	0.15
CMBF3216-221PCK	220 ± 25%	100	700	0.35
CMBF3216-301PCK	300 ± 25%	100	700	0.35
CMBF3216-471PCK	470 ± 25%	100	400	0.35
CMBF3216-601PCK	600 ± 25%	100	600	0.40
CMBF3216-801PCK	800 ± 25%	100	300	0.60
CMBF3216-102PCK	1000 ± 25%	100	300	0.60
CMBF3216-121PCC	120 ± 25%	100	700	0.25
CMBF3216-151PCC	150 ± 25%	100	700	0.25
CMBF3216-221PCC	220 ± 25%	100	600	0.30
CMBF3216-301PCC	300 ± 25%	100	600	0.35
CMBF3216-471PCC	470 ± 25%	100	550	0.40
CMBF3216-601PCC	600 ± 25%	100	500	0.50
CMBF3216-801PCC	800 ± 25%	100	400	0.50
CMBF3216-102PCC	1000 ± 25%	100	300	0.55
CMBF3216-102PCH	1000 ± 25%	100	300	0.60
CMBF3216-152PCV	1500 ± 25%	50	300	0.70
CMBF3216-202PCV	2000 ± 25%	30	300	0.70
CMBF3216-121PCW	120 ± 25%	100	300	0.15
CMBF3216-151PCW	150 ± 25%	100	300	0.20
CMBF3216-221PCW	220 ± 25%	100	250	0.30
CMBF3216-301PCW	300 ± 25%	100	200	0.35
CMBF3216-471PCW	470 ± 25%	100	200	0.40
CMBF3216-601PCW	600 ± 25%	100	200	0.45

① Test equipment: E4991A or equivalent; Test Fixture: 16192A or equivalents; Test temperature: 25±10°C