

**承认书**  
**Specification**

客户名称:

Customer Name:

(请填写贵司全名)

规格书编号:

Spicification NO :

Spec-PDB Series Rev.01

客户品名:

Product P/N :

(请填写贵司物料品名)

华拓品名:

Manufacturer's P/N :

(请填写欲承认的华拓品名)

变更履历:

Revised record:

Rev.	Date	Changed Contents	Change reasons	Approved by
01	2013-12-10	New released		Buck

客户承认栏 (请签名并写明日期后回传)

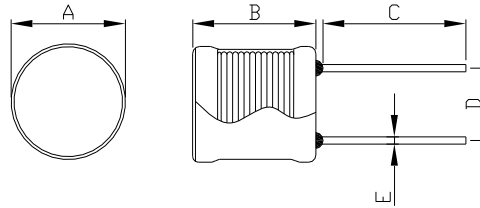
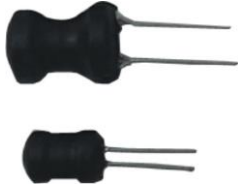
广州华拓电子科技有限公司

Customer's Approval

Confirmed	Checked	Prepared
Buck	Dana	Amy

Type Name: PDB Series

Dimensions/外形尺寸图(Unit:mm)



Shape and Size:(Dimensions are in mm)

Type Name/型名	A	B	C(Ref.)	D(Ref.)	E(Ref.)
PDB0406	4.5±0.5	7.0±1.0	10.0	2.0	0.5
PDB0507	5.5±0.5	9.0±1.0	10.0	2.5	0.6
PDB0608	6.5±1.0	10.0±1.0	10.0	3.0	0.6
PDB0708	8.5Max.	10.5Max.	10.0	5.0	0.6
PDB0810	8.5±1.0	12.0±1.0	10.0	5.0	0.6
PDB0912	9.5±1.0	14.0±1.0	10.0	5.0	0.6
PDB1012	12.5Max.	13.5Max.	10.0	5.5	0.8
PDB1016	12.5Max.	17.5Max.	10.0	6.5	0.8
PDB1416	17.0Max.	19.5Max.	10.0	7.5	0.8
PDB1618	18.0 Max.	21.0 Max.	10.0	8.5	1.0
PDB1820	20.0 Max.	22.5 Max.	10.0	10.0	1.0

Product Identification/品名注释

**P D B 0406 - 100 K B**

(1) (2) (3) (4) (5) (6) (7)

(1) Pin/插脚制品

(2) Dure Core Used /使用工字型磁芯

(3) UL Tube Used /使用 UL 套管

(4) Dimension symbol/尺寸表示:

0406=4 X 6 mm ( W X H )

(5) Inductance value/电感值:

4R7= 4.7uH,100=10uH,101=100uH

(6) Tolerance/公差: M=±20% ,K=±10%

(7) Packing Style/包装形态:B=Bulked packing/散装

Specifications/规格

Type Name: PDB0406

Part No./品名	Inductance(μH)	Q(Min.)	D.C.R. (Ω)Max.	IDC(Max.)mA ※	SRF(Min.)MHz	Test Condition
PDB0406-1R0MB	1.0±20%	84	0.10	1400	200	7.96MHz
PDB0406-1R2MB	1.2±20%	70	0.12	1200	170	7.96MHz
PDB0406-1R5MB	1.5±20%	80	0.15	1200	140	7.96MHz
PDB0406-1R8MB	1.8±20%	90	0.17	1100	130	7.96MHz
PDB0406-2R2MB	2.2±20%	98	0.20	1100	125	7.96MHz
PDB0406-2R7MB	2.7±20%	94	0.20	1300	113	7.96MHz
PDB0406-3R3MB	3.3±20%	93	0.22	1300	92	7.96MHz
PDB0406-3R9MB	3.9±20%	86	0.24	1300	77	7.96MHz
PDB0406-4R7MB	4.7±20%	84	0.26	800	58	7.96MHz

PDB0406-5R6MB	5.6±20%	84	0.28	800	42	7.96MHz
PDB0406-6R8MB	6.8±20%	82	0.30	800	35	7.96MHz
PDB0406-8R2MB	8.2±20%	77	0.35	800	32	7.96MHz
PDB0406-100KB	10±10%	70	0.46	700	27	2.52MHz
PDB0406-120KB	12±10%	80	0.48	600	20	2.52MHz
PDB0406-150KB	15±10%	77	0.55	600	18	2.52MHz
PDB0406-180KB	18±10%	87	0.65	500	16	2.52MHz
PDB0406-220KB	22±10%	84	0.72	500	14	2.52MHz
PDB0406-270KB	27±10%	77	0.78	400	13	2.52MHz
PDB0406-330KB	33±10%	74	0.87	400	12	2.52MHz
PDB0406-390KB	39±10%	70	0.90	400	11	2.52MHz
PDB0406-470KB	47±10%	65	0.98	400	10	2.52MHz
PDB0406-560KB	56±10%	58	1.5	320	9.5	2.52MHz
PDB0406-680KB	68±10%	55	1.9	300	9.0	2.52MHz
PDB0406-820KB	82±10%	53	2.5	300	8.5	2.52MHz
PDB0406-101KB	100±10%	56	3.0	200	7.0	7.96KHz
PDB0406-121KB	120±10%	70	3.8	200	6.3	7.96KHz
PDB0406-151KB	150±10%	63	4.5	200	5.7	7.96KHz
PDB0406-181KB	180±10%	62	5.0	200	5.3	7.96KHz
PDB0406-221KB	220±10%	66	5.8	200	5.0	7.96KHz
PDB0406-271KB	270±10%	66	6.5	150	4.5	7.96KHz
PDB0406-331KB	330±10%	60	7.0	150	4.0	7.96KHz
PDB0406-391KB	390±10%	56	7.7	150	3.8	7.96KHz
PDB0406-471KB	470±10%	61	8.0	120	3.5	7.96KHz
PDB0406-561KB	560±10%	61	8.5	120	3.2	7.96KHz
PDB0406-681KB	680±10%	56	9.5	120	3.0	7.96KHz
PDB0406-821KB	820±10%	61	15	100	2.8	7.96KHz
PDB0406-102KB	1000±10%	77	17	100	2.5	2.52KHz
PDB0406-122KB	1200±10%	71	20	80	2.3	2.52KHz
PDB0406-152KB	1500±10%	76	22	80	2.1	2.52KHz
PDB0406-182KB	1800±10%	77	25	70	1.8	2.52KHz
PDB0406-222KB	2200±10%	81	26	60	1.6	2.52KHz
PDB0406-272KB	2700±10%	57	46	40	1.35	2.52KHz
PDB0406-332KB	3300±10%	60	50	30	1.25	2.52KHz
PDB0406-392KB	3900±10%	56	54	30	1.20	2.52KHz
PDB0406-472KB	4700±10%	65	60	30	1.05	2.52KHz
PDB0406-562KB	5600±10%	66	65	30	1.02	2.52KHz
PDB0406-682KB	6800±10%	66	72	30	0.95	2.52KHz
PDB0406-822KB	8200±10%	70	80	20	0.92	2.52KHz
PDB0406-103KB	10000±10%	35	95	10	0.90	2.52KHz

※ The IDC current when the inductance decreases to 75% of initial value. (Ta=25°C)

**Type Name: PDB0507**

Part No./品名	Inductance(μH)	Q(Min.)	D.C.R. (Ω)Max.	IDC(Max.)mA ※	SRF(Min.)MHz	Test Condition
PDB0507-1R0MB	1.0±20%	85	0.014	3500	120	7.96MHz
PDB0507-1R5MB	1.5±20%	85	0.02	3000	90	7.96MHz
PDB0507-2R2MB	2.2±20%	85	0.025	2500	55	7.96MHz

PDB0507-3R3MB	3.3±20%	85	0.03	2000	50	7.96MHz
PDB0507-4R7MB	4.7±20%	80	0.04	1700	30	7.96MHz
PDB0507-6R8MB	6.8±20%	75	0.06	1300	25	7.96MHz
PDB0507-100KB	10±10%	70	0.08	1000	22	2.52MHz
PDB0507-120KB	12±10%	70	0.10	950	20	2.52MHz
PDB0507-150KB	15±10%	65	0.11	900	16	2.52MHz
PDB0507-180KB	18±10%	50	0.115	800	14	2.52MHz
PDB0507-220KB	22±10%	50	0.12	700	14	2.52MHz
PDB0507-270KB	27±10%	50	0.14	600	12	2.52MHz
PDB0507-330KB	33±10%	50	0.16	550	10	2.52MHz
PDB0507-390KB	39±10%	45	0.18	500	9	2.52MHz
PDB0507-470KB	47±10%	45	0.20	500	9	2.52MHz
PDB0507-560KB	56±10%	35	0.22	450	8	2.52MHz
PDB0507-680KB	68±10%	35	0.30	450	8	2.52MHz
PDB0507-820KB	82±10%	35	0.34	400	7	2.52MHz
PDB0507-101KB	100±10%	20	0.36	400	6	2.52MHz
PDB0507-121KB	120±10%	20	0.44	350	5.5	2.52MHz
PDB0507-151KB	150±10%	20	0.52	300	5	2.52MHz
PDB0507-181KB	180±10%	20	0.65	300	4.5	2.52MHz
PDB0507-221KB	220±10%	20	0.75	250	4	2.52MHz
PDB0507-271KB	270±10%	25	1.0	240	3.5	2.52MHz
PDB0507-331KB	330±10%	25	1.3	200	3	2.52MHz
PDB0507-391KB	390±10%	25	1.4	180	3	2.52MHz
PDB0507-471KB	470±10%	25	1.6	160	2.7	2.52MHz
PDB0507-561KB	560±10%	25	2.0	160	2.5	2.52MHz
PDB0507-681KB	680±10%	25	2.3	140	2.4	2.52MHz
PDB0507-821KB	820±10%	25	2.7	130	2.2	2.52MHz
PDB0507-102KB	1000±10%	50	3.1	120	2	2.52MHz
PDB0507-122KB	1200±10%	65	4.6	110	1.5	2.52MHz
PDB0507-152KB	1500±10%	65	5.3	100	1.3	2.52MHz
PDB0507-182KB	1800±10%	65	6.2	90	1.2	2.52MHz
PDB0507-222KB	2200±10%	65	6.8	80	1.1	2.52MHz
PDB0507-272KB	2700±10%	80	10	60	1.0	252KHz
PDB0507-332KB	3300±10%	75	12	60	0.95	2.52MHz
PDB0507-392KB	3900±10%	70	13	55	0.90	2.52MHz
PDB0507-472KB	4700±10%	65	15	55	0.90	2.52MHz
PDB0507-562KB	5600±10%	65	22	50	0.80	2.52MHz
PDB0507-682KB	6800±10%	65	25	45	0.75	2.52MHz
PDB0507-822KB	8200±10%	65	28	45	0.70	2.52MHz
PDB0507-103KB	10000±10%	65	35	35	0.60	2.52MHz
PDB0507-123KB	12000±10%	65	45	30	0.45	2.52MHz
PDB0507-153KB	15000±10%	65	52	30	0.40	2.52MHz
PDB0507-183KB	18000±10%	65	58	30	0.40	2.52MHz
PDB0507-223KB	22000±10%	65	80	20	0.35	2.52MHz
PDB0507-273KB	27000±10%	65	90	20	0.30	2.52MHz
PDB0507-333KB	33000±10%	55	135	15	0.25	2.52MHz
PDB0507-393KB	39000±10%	55	150	15	0.25	2.52MHz

PDB0507-473KB	47000±10%	55	170	15	0.25	2.52MHz
---------------	-----------	----	-----	----	------	---------

※ The IDC current when the inductance decreases to 75% of initial value. (Ta=25℃)

**Type Name: PDB0608**

Part No./品名	Inductance(μH)	Q(Min.)	D.C.R. (Ω)Max.	IDC(Max.)mA ※	SRF(Min.)MHz	Test Condition
PDB0608-100KB	10±10%	25	0.09	1300	16	2.52MHz
PDB0608-120KB	12±10%	25	0.10	1100	15	2.52MHz
PDB0608-150KB	15±10%	25	0.11	1050	13	2.52MHz
PDB0608-180KB	18±10%	20	0.12	1000	12	2.52MHz
PDB0608-220KB	22±10%	25	0.12	960	11	2.52MHz
PDB0608-270KB	27±10%	25	0.17	20	10	2.52MHz
PDB0608-330KB	33±10%	25	0.19	880	8.8	2.52MHz
PDB0608-390KB	39±10%	20	0.22	860	8.4	2.52MHz
PDB0608-470KB	47±10%	20	0.23	830	8.2	2.52MHz
PDB0608-560KB	56±10%	20	0.29	810	7.9	2.52MHz
PDB0608-680KB	68±10%	20	0.37	750	7.0	2.52MHz
PDB0608-820KB	82±10%	20	0.39	740	6.5	2.52MHz
PDB0608-101KB	100±10%	30	0.44	710	5.7	2.52MHz
PDB0608-121KB	120±10%	30	0.64	680	5.2	2.52MHz
PDB0608-151KB	150±10%	35	0.73	600	4.7	2.52MHz
PDB0608-181KB	180±10%	35	0.82	540	4.2	2.52MHz
PDB0608-221KB	220±10%	35	0.92	450	3.7	2.52MHz
PDB0608-271KB	270±10%	30	1.3	420	3.5	2.52MHz
PDB0608-331KB	330±10%	40	1.5	400	3.2	2.52MHz
PDB0608-391KB	390±10%	25	1.8	370	2.9	2.52MHz
PDB0608-471KB	470±10%	35	2.3	340	2.4	2.52MHz
PDB0608-561KB	560±10%	35	3.0	280	2.2	2.52MHz
PDB0608-681KB	680±10%	45	3.25	250	2.0	2.52MHz
PDB0608-821KB	820±10%	40	4.15	230	1.6	2.52MHz
PDB0608-102KB	1000±10%	80	4.55	210	1.5	2.52MHz
PDB0608-122KB	1200±10%	80	5.20	200	1.4	2.52MHz
PDB0608-152KB	1500±10%	75	7.55	180	1.3	2.52MHz
PDB0608-182KB	1800±10%	80	7.55	160	1.2	2.52MHz
PDB0608-222KB	2200±10%	80	8.30	150	1.1	2.52MHz
PDB0608-272KB	2700±10%	80	9.60	130	1.0	2.52MHz
PDB0608-332KB	3300±10%	80	10.9	130	0.85	2.52MHz
PDB0608-392KB	3900±10%	80	16.0	100	0.78	2.52MHz
PDB0608-472KB	4700±10%	80	17.8	85	0.68	2.52MHz
PDB0608-562KB	5600±10%	80	20.0	70	0.62	2.52MHz
PDB0608-682KB	6800±10%	80	27.3	65	0.61	2.52MHz
PDB0608-822KB	8200±10%	80	31.2	60	0.60	2.52MHz
PDB0608-103KB	10000±10%	80	39.0	58	0.48	2.52MHz
PDB0608-123KB	12000±10%	80	42.9	56	0.44	2.52MHz
PDB0608-153KB	15000±10%	70	65.0	53	0.35	2.52MHz
PDB0608-183KB	18000±10%	75	72.8	50	0.30	2.52MHz
PDB0608-223KB	22000±10%	80	82.5	45	0.28	2.52MHz
PDB0608-273KB	27000±10%	80	95.4	42	0.25	2.52MHz

PDB0608-333KB	33000±10%	70	135	38	0.23	2.52MHz
PDB0608-393KB	39000±10%	70	154	37	0.20	2.52MHz
PDB0608-473KB	47000±10%	70	173	35	0.16	2.52MHz

※ The IDC current when the inductance decreases to 75% of initial value. (Ta=25℃)

**Type Name: PDB0810**

Part No./品名	Inductance(μH)	Q(Min.)	D.C.R. (Ω)Max.	IDC(Max.)mA ※	SRF(Min.)MHz	Test Condition
PDB0810-1R0MB	1.0±20%	90	0.02	3400	100	7.96MHz
PDB0810-1R2MB	1.2±20%	90	0.02	3400	90	7.96MHz
PDB0810-1R5MB	1.5±20%	95	0.02	3400	80	7.96MHz
PDB0810-1R8MB	1.8±20%	95	0.03	3300	75	7.96MHz
PDB0810-2R2MB	2.2±20%	100	0.03	3000	70	7.96MHz
PDB0810-2R7MB	2.7±20%	110	0.04	3000	60	7.96MHz
PDB0810-3R3MB	3.3±20%	110	0.04	3000	56	7.96MHz
PDB0810-3R9MB	3.9±20%	110	0.05	2900	52	7.96MHz
PDB0810-4R7MB	4.7±20%	110	0.05	2900	30	7.96MHz
PDB0810-5R6MB	5.6±20%	110	0.06	2600	30	7.96MHz
PDB0810-6R8MB	6.8±20%	90	0.06	2500	20	7.96MHz
PDB0810-8R2MB	8.2±20%	80	0.06	2000	17	7.96MHz
PDB0810-100KB	10±10%	90	0.10	1600	12	2.52MHz
PDB0810-120KB	12±10%	90	0.10	1400	11	2.52MHz
PDB0810-150KB	15±10%	90	0.10	1300	10	2.52MHz
PDB0810-180KB	18±10%	80	0.11	1200	9	2.52MHz
PDB0810-220KB	22±10%	70	0.13	1100	8	2.52MHz
PDB0810-270KB	27±10%	70	0.14	1000	7	2.52MHz
PDB0810-330KB	33±10%	70	0.16	900	7	2.52MHz
PDB0810-390KB	39±10%	70	0.16	800	6	2.52MHz
PDB0810-470KB	47±10%	70	0.16	700	5.5	2.52MHz
PDB0810-560KB	56±10%	60	0.22	700	5.5	2.52MHz
PDB0810-680KB	68±10%	60	0.23	600	5	2.52MHz
PDB0810-820KB	82±10%	60	0.27	500	4.5	2.52MHz
PDB0810-101KB	100±10%	40	0.29	400	4.5	2.52MHz
PDB0810-121KB	120±10%	40	0.33	400	4.5	2.52MHz
PDB0810-151KB	150±10%	40	0.46	350	4.5	2.52MHz
PDB0810-181KB	180±10%	40	0.51	350	4	2.52MHz
PDB0810-221KB	220±10%	40	0.62	300	3.5	2.52MHz
PDB0810-271KB	270±10%	30	0.65	250	3	2.52MHz
PDB0810-331KB	330±10%	30	0.79	250	3	2.52MHz
PDB0810-391KB	390±10%	30	0.91	200	2.5	2.52MHz
PDB0810-471KB	470±10%	30	1.2	180	2.5	2.52MHz
PDB0810-561KB	560±10%	30	1.2	160	2	2.52MHz
PDB0810-681KB	680±10%	30	1.5	140	2	2.52MHz
PDB0810-821KB	820±10%	25	1.7	140	2	2.52MHz
PDB0810-102KB	1000±10%	50	2.0	120	2	2.52MHz
PDB0810-122KB	1200±10%	45	2.3	100	1.5	2.52MHz
PDB0810-152KB	1500±10%	45	2.9	80	1.5	2.52MHz
PDB0810-182KB	1800±10%	45	3.5	80	1.5	2.52MHz
PDB0810-222KB	2200±10%	50	4.2	70	1	2.52MHz

PDB0810-272KB	2700±10%	50	5.1	60	1	2.52MHz
PDB0810-332KB	3300±10%	50	6.1	60	0.9	2.52MHz
PDB0810-392KB	3900±10%	50	7.8	50	0.8	2.52MHz
PDB0810-472KB	4700±10%	55	11	50	0.7	2.52MHz
PDB0810-562KB	5600±10%	55	12	45	0.6	2.52MHz
PDB0810-682KB	6800±10%	55	14	45	0.6	2.52MHz
PDB0810-822KB	8200±10%	60	15	40	0.6	2.52MHz
PDB0810-103KB	10000±10%	100	20	35	0.5	2.52MHz
PDB0810-123KB	12000±10%	100	24	35	0.4	2.52MHz
PDB0810-153KB	15000±10%	100	28	35	0.4	2.52MHz
PDB0810-183KB	18000±10%	100	42	30	0.4	2.52MHz
PDB0810-223KB	22000±10%	100	43	30	0.3	2.52MHz
PDB0810-273KB	27000±10%	100	55	25	0.3	2.52MHz
PDB0810-333KB	33000±10%	90	65	25	0.3	2.52MHz
PDB0810-393KB	39000±10%	90	87	25	0.2	2.52MHz
PDB0810-473KB	47000±10%	85	98	25	0.2	2.52MHz
PDB0810-563KB	56000±10%	80	128	20	0.2	2.52MHz
PDB0810-683KB	68000±10%	70	141	20	0.2	2.52MHz
PDB0810-823KB	82000±10%	70	161	20	0.2	2.52MHz
PDB0810-104KB	100000±10%	55	180	20	0.2	2.52MHz

※ The IDC current when the inductance decreases to 75% of initial value. (Ta=25°C)

**Type Name: PDB0912**

Part No./品名	Inductance(μH)	Q(Min.)	D.C.R. (Ω)Max.	IDC(Max.)mA ※	SRF(Min.)MHz	Test Condition
PDB0912-100KB	10±10%	110	0.04	2800	24	2.52MHz
PDB0912-120KB	12±10%	110	0.04	2700	18	2.52MHz
PDB0912-150KB	15±10%	110	0.05	2300	11	2.52MHz
PDB0912-180KB	18±10%	90	0.06	2100	8.1	2.52MHz
PDB0912-220KB	22±10%	90	0.07	2000	9.2	2.52MHz
PDB0912-270KB	27±10%	90	0.10	1700	7.1	2.52MHz
PDB0912-330KB	33±10%	90	0.12	1500	7.1	2.52MHz
PDB0912-390KB	39±10%	80	0.12	1400	6.9	2.52MHz
PDB0912-470KB	47±10%	70	0.13	1300	6.0	2.52MHz
PDB0912-560KB	56±10%	70	0.14	1200	5.7	2.52MHz
PDB0912-680KB	68±10%	60	0.15	1000	5.4	2.52MHz
PDB0912-820KB	82±10%	50	0.16	900	4.6	2.52MHz
PDB0912-101KB	100±10%	60	0.25	700	4.0	2.52MHz
PDB0912-121KB	120±10%	60	0.28	700	3.6	2.52MHz
PDB0912-151KB	150±10%	55	0.32	700	3.1	2.52MHz
PDB0912-181KB	180±10%	55	0.47	600	2.8	2.52MHz
PDB0912-221KB	220±10%	55	0.53	500	2.5	2.52MHz
PDB0912-271KB	270±10%	50	0.60	450	2.4	2.52MHz
PDB0912-331KB	330±10%	50	0.85	400	2.0	2.52MHz
PDB0912-391KB	390±10%	50	0.95	350	2.1	2.52MHz
PDB0912-471KB	470±10%	40	1.1	350	1.9	2.52MHz
PDB0912-561KB	560±10%	30	1.2	300	1.8	2.52MHz
PDB0912-681KB	680±10%	30	1.3	250	1.7	2.52MHz

PDB0912-821KB	820±10%	30	1.4	200	1.5	2.52MHz
PDB0912-102KB	1000±10%	70	2.0	200	1.1	2.52MHz
PDB0912-122KB	1200±10%	70	2.3	180	1.0	2.52MHz
PDB0912-152KB	1500±10%	70	2.9	150	1.0	2.52MHz
PDB0912-182KB	1800±10%	70	3.3	120	0.9	2.52MHz
PDB0912-222KB	2200±10%	70	4.5	110	0.7	2.52MHz
PDB0912-272KB	2700±10%	70	5.5	90	0.7	2.52MHz
PDB0912-332KB	3300±10%	60	5.7	80	0.6	2.52MHz
PDB0912-392KB	3900±10%	60	6.5	80	0.6	2.52MHz
PDB0912-472KB	4700±10%	60	7.2	60	0.6	2.52MHz
PDB0912-562KB	5600±10%	60	9.5	50	0.5	2.52MHz
PDB0912-682KB	6800±10%	60	11	50	0.5	2.52MHz
PDB0912-822KB	8200±10%	50	13	50	0.4	2.52MHz
PDB0912-103KB	10000±10%	120	16	40	0.3	2.52MHz
PDB0912-123KB	12000±10%	120	18	40	0.3	2.52MHz
PDB0912-153KB	15000±10%	110	21	40	0.3	2.52MHz
PDB0912-183KB	18000±10%	110	23	40	0.3	2.52MHz
PDB0912-223KB	22000±10%	110	33	35	0.2	2.52MHz
PDB0912-273KB	27000±10%	110	37	35	0.2	2.52MHz
PDB0912-333KB	33000±10%	90	42	35	0.2	2.52MHz
PDB0912-393KB	39000±10%	90	45	30	0.2	2.52MHz
PDB0912-473KB	47000±10%	80	52	30	0.2	2.52MHz

※ The IDC current when the inductance decreases to 75% of initial value. (Ta=25℃)

**Type Name: PDB1820**

Part No./品名	Inductance(μH)	D.C.R. (Ω)Max.	IDC(Max.)mA ※	Test Condition
PDB1820-220KB	22±10%	0.07	2000	1KHz
PDB1820-270KB	27±10%	0.10	1700	1KHz
PDB1820-330KB	33±10%	0.12	1500	1KHz
PDB1820-390KB	39±10%	0.12	1400	1KHz
PDB1820-470KB	47±10%	0.13	1300	1KHz
PDB1820-560KB	56±10%	0.14	1200	1KHz
PDB1820-680KB	68±10%	0.15	1000	1KHz
PDB1820-820KB	82±10%	0.16	900	1KHz
PDB1820-101KB	100±10%	0.25	700	1KHz
PDB1820-121KB	120±10%	0.28	700	1KHz
PDB1820-151KB	150±10%	0.32	700	1KHz
PDB1820-181KB	180±10%	0.47	600	1KHz
PDB1820-221KB	220±10%	0.53	500	1KHz
PDB1820-271KB	270±10%	0.60	450	1KHz
PDB1820-331KB	330±10%	0.85	400	1KHz
PDB1820-391KB	390±10%	0.95	350	1KHz
PDB1820-471KB	470±10%	1.1	350	1KHz
PDB1820-561KB	560±10%	1.2	300	1KHz
PDB1820-681KB	680±10%	1.3	250	1KHz
PDB1820-821KB	820±10%	1.4	200	1KHz
PDB1820-102KB	1000±10%	2.0	200	1KHz

※ The IDC current when the inductance decreases to 75% of initial value. (Ta=25℃)