

# 承认书

## Specification

客户名称:

**Customer Name:** \_\_\_\_\_  
(请填写贵司全名)

规格书编号:

**Spicification NO :** \_\_\_\_\_ **Spec-CWCF Series Rev.01** \_\_\_\_\_

客户品名 :

**Product P/N :** \_\_\_\_\_  
(请填写贵司物料品名)

华拓品名 :

**Manufacturer's P/N :** \_\_\_\_\_  
(请填写欲承认的华拓品名)

变更履历:

Revised record:

Rev.	Date	Changed Contents	Change reasons	Approved by
01	2013-12-10	New released		Buck

客户承认栏 (请签名并写明日期后回传)

广州华拓电子科技有限公司

Customer's Approval

Confirmed	Checked	Prepared
Buck	Dana	Amy

Type: CWCF2012D, 2012H, 2520D, 3216H, 3225D, 3225H

**Feature/特长**

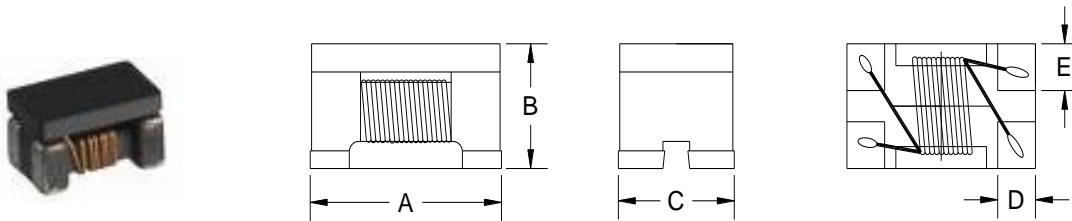
- High performance wire wound type common mode Chokes.
- Applicable for noise suppression within wide frequency range.
- Excellent solderability and high heat resistance.
- RoHS compliant.
- 高可靠性绕线片式共模线圈。
- 能在较宽的频率范围内抑制EMI。
- 良好的可焊性、耐焊性。
- RoHS指定对应。

**Applications/用途**

Ideally used in USB lines, IEEE1394 lines for personal computers and peripheral equipments, small digital AV equipments, DVC, STB, etc.

适用于计算机及周边设备、小型数字 AV 设备、DVC、STB、USB lines、IEEE1394 lines。

**Dimensions/外形图**



Unit: mm

Type	A	B	C	D	E	Packaging (pcs/reel)
CWCF2012D	2.0	1.3 max.	1.2	0.40	0.35	2000
CWCF2012H	2.0	1.4 max.	1.2	0.45	0.40	2000
CWCF2520D	2.5	1.3 max.	2.0	0.45	0.40	2000
CWCF3216H	3.2	2.2 max.	1.6	0.60	0.60	2000
CWCF3225D	3.2	2.3 max.	2.5	0.70	0.65	1000
CWCF3225H	3.2	2.9 max.	2.5	0.60	0.90	1500

Dimensions without tolerance are typical./无公差尺寸为参考值。

**Product Identification/品名注释**

C W C F 2012 D - 900 P C  
(1) (2) (3) (4) (5) (6) (7) (8) (9)

- (1) SMD/表面安装制品
- (2) Wire wound chip /绕线片式
- (3) Common Mode Chokes/共模线圈
- (4) Ferrite/铁氧体
- (5) Dimension symbol/尺寸表示:  
2012=2.0 X 1.2 mm (L X W)
- (6) Internal Control Code/内部管理编码
- (7) Impedance value/阻抗值:  
900= 90Ω, 301=300Ω, 102=1000Ω
- (8) Tolerance/公差: P (±25%), M (±20%)
- (9) Packing Style/包装形态: C=Carrier taping/载带包装

### CWCF2012D Electrical Characteristics

Part Number	Common mode Impedance( $\Omega$ ) <sup>①</sup>	DCR max. ( $\Omega$ )	Rated current (mA)	Rated Voltage (Vdc)
CWCF2012D-900PC	90 $\pm$ 25%	0.19	400	50
CWCF2012D-121PC	120 $\pm$ 25%	0.22	370	50
CWCF2012D-201PC	200 $\pm$ 25%	0.25	350	50
CWCF2012D-361PC	360 $\pm$ 25%	0.50	220	50

### CWCF2012H Electrical Characteristics

Part Number	Common mode Impedance( $\Omega$ ) <sup>①</sup>	DCR max. ( $\Omega$ )	Rated current (mA)	Rated Voltage (Vdc)
CWCF2012H-900PC	90 $\pm$ 25%	0.30	400	50
CWCF2012H-161PC	160 $\pm$ 25%	0.35	350	50
CWCF2012H-221PC	220 $\pm$ 25%	0.40	300	50
CWCF2012H-261PC	260 $\pm$ 25%	0.40	300	50
CWCF2012H-371PC	370 $\pm$ 25%	0.50	300	50

### CWCF2520D Electrical Characteristics

Part Number	Common mode Impedance( $\Omega$ ) <sup>①</sup>	DCR max. ( $\Omega$ )	Rated current (mA)	Rated Voltage (Vdc)
CWCF2520D-301PC	300 $\pm$ 25%	0.35	400	20
CWCF2520D-451PC	450 $\pm$ 25%	0.40	350	20
CWCF2520D-601PC	600 $\pm$ 25%	0.45	300	20
CWCF2520D-102PC	1000 $\pm$ 25%	0.90	200	20

### CWCF3216H Electrical Characteristics

Part Number	Common mode Impedance( $\Omega$ ) <sup>①</sup>	DCR max. ( $\Omega$ )	Rated current (mA)	Rated Voltage (Vdc)
CWCF3216H-900PC	90 $\pm$ 25%	0.30	400	50
CWCF3216H-161PC	160 $\pm$ 25%	0.35	350	50
CWCF3216H-221PC	220 $\pm$ 25%	0.45	300	50

### CWCF3225D Electrical Characteristics

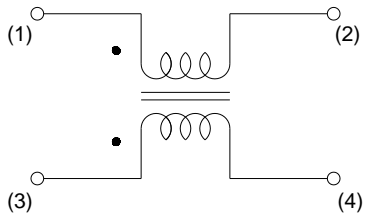
Part Number	Common mode Impedance( $\Omega$ ) <sup>①</sup>	DCR max. ( $\Omega$ )	Rated current(mA)	Rated Voltage (Vdc)
CWCF3225D-800TS2W	80	0.15	400	20
CWCF3225D-161TS2W	160	0.20	350	20
CWCF3225D-271TS2W	270	0.30	300	20
CWCF3225D-102TS2W	1000	0.50	200	20

### CWCF3225H Electrical Characteristics

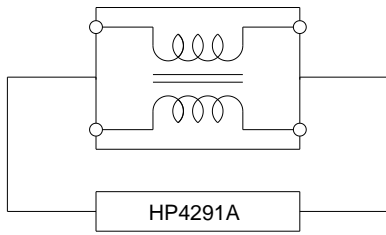
Part Number	Common mode Impedance( $\Omega$ ) <sup>①</sup>	DCR max. ( $\Omega$ )	Rated current (mA)	Rated Voltage (Vdc)
CWCF3225H-800PC	80 $\pm$ 25%	0.15	400	20
CWCF3225H-161PC	160 $\pm$ 25%	0.20	350	20
CWCF3225H-271PC	270 $\pm$ 25%	0.30	300	20
CWCF3225H-601PC	600 $\pm$ 25%	0.20	1000	60
CWCF3225H-102PC	1000 $\pm$ 25%	0.50	200	20

① Impedance tested using an Agilent/HP 4191A or equivalent.

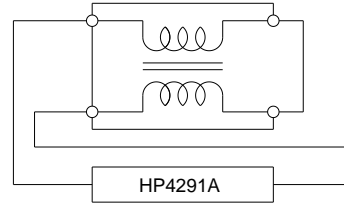
Equivalent Circuit/等价回路



Measuring Circuits/测定回路



Common mode/共模



Normal mode/差模